

A large photograph of a graduation ceremony, showing a crowd of graduates in blue gowns and caps, many of whom are throwing their caps into the air. The image is overlaid with a semi-transparent dark green filter.

YEAR 9 GUIDED CHOICES 2025

Securing Life Chances Daily...

Table of contents

Welcome Message	1
Good To Know	2
Making The Choice	3
Time Line	4
The World of Employment	5
The World of Employment- Dudley	7
Careerometer	8
Suite of academic subjects	12
Post 16	16

Starting With Your Future In Mind...

Dear Parents and Carers

At St James Academy learners are offered a broad curriculum and the guided choices process ensures that learners study relevant subjects which meet their needs and prepare them for life beyond school.

Year 9 Guided Choices and Options Evening 17th March 2025 at 4pm.

To support you and your child in making an informed decision regarding their option choices, we would like to invite you to our Guided Choices & Option Evening on Monday 17th March 2025 at 4pm. We expect learners to be in full uniform. On the evening there will be a presentation to explain the process followed by a Subject Fair which will give you an opportunity to speak with subject leaders about the courses available. During this time, parents and learners can find out:

- **What will I learn?**
- **How will I learn**
- **Who is the course for?**
- **What is the structure of the course?**
- **What courses / employment could I progress to at the end of the course?**
- **Who do I contact for further information?**

In school, we have put a detailed and carefully considered plan in place to ensure that your child will have all the knowledge and information to enable them to make appropriate choices for their future success including:

- **Data collection from subject experts**
- **Assembly**
- **PSHE Sessions**
- **Subject talks**
- **One to One meeting with a member of the senior leadership team**

Throughout this process, we would like you and your child to be committed to having high aspirations and dreaming big in order to make the right choices. Please note, you will receive this information pack and the 'Dudley Academy Trust' Options booklet which contains information on every subject offered across the whole Trust however, not necessarily all subjects will be available at St James. Our Curriculum Team Leaders and Senior Leadership Team will use the data available to ensure they guide you and your child throughout this process.

After the Guided Choices Evening, choices will be submitted online. You will receive an invitation to register on Eventbrite if you require a further meeting. Our aim is to ensure ALL option choices are submitted online by the 31st March 2025. In this booklet, you will see the published timeline of events for you to engage with the process and a reflection page to support your discussions with your child. While this process can sometimes be a daunting one, I hope your child is excited about the decisions they have to make too. Please do not hesitate to contact the Academy if you have any questions. Please email: Mr Palmer, Assistant Principal: bpalmer@stjamesacademy.org.uk

Mr Palmer would be responsible for receiving your emails as a point of contact and passing the request to the appropriate guided choice team member. You will receive a response from a member of the team in a timely manner.

Good To Know...

TIMETABLE

Some of the subjects will be new to learners and some are an extension of key stage 3. Learners will study a minimum of 8 subjects. The timetable allocation for each subject for each option subject is 3 hours. All learners will have a timetable of 25 lessons a week consisting of 1 hour lessons.

EBACC

The English Baccalaureate (EBACC) provides learners with greater options for further study and further career options in the future. We strongly advise learners study a core set of five academic subjects - English, Maths, Sciences, History or Geography and a language.

Learners are expected to choose subjects in the order of preference. We strongly recommend that learners consider the following when choosing:

- Choose subjects you enjoy
- Choose subjects you are interested in
- Choose subjects that link to your future career pathway
- Choose subjects you will excel in

GRADES

In 2017 the grading system for GCSE was changed from alphabetical system (A, B, C) to a numerical system using grade 9-1. To aid your understanding of the new grading system, below is a table showing the historical equivalent.

Old grades	New grades
A*	9
A	8
	7
B	6
C	5 STRONG PASS
	4 STANDARD PASS
D	
E	3
F	2
G	1
U	U

Making The Choice...

Career plan: In many cases a learner has a specific career ambition. Many careers have educational requirements expressed in terms of examination results in particular subjects so it is vital to choose the right subjects.

Personal preference: As young people get older their personal likes and dislikes become clearer cut and they may not want to study every subject. Providing that a good broad general education is undertaken, there is no reason why a learner should be disadvantaged.

This choice is important and the following section is designed to help both learners and parents to make the best decision possible.

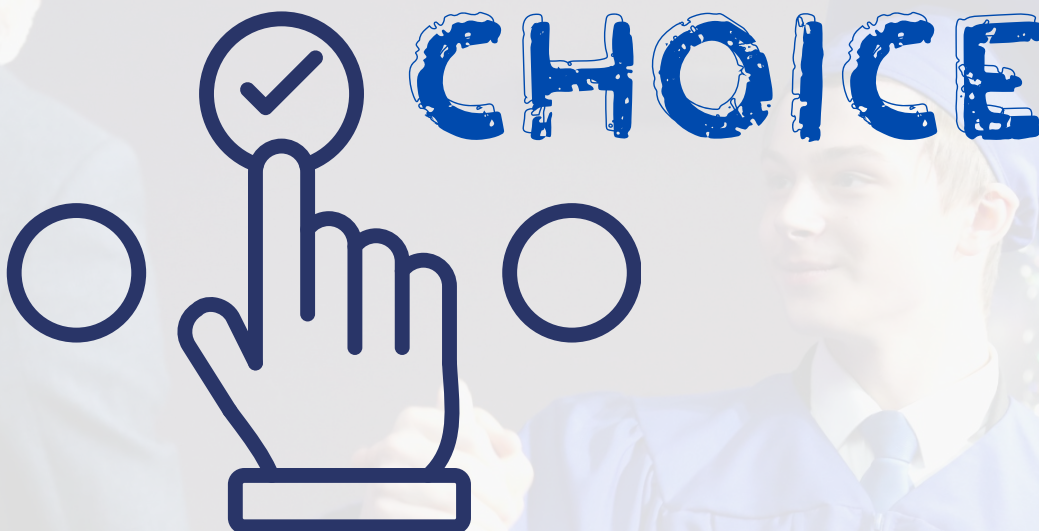
There are three main considerations to bear in mind:

The subjects chosen may have an important bearing on the future choice of career.

The choice will determine the pattern of study for each learner for two years and it must therefore be a combination which will give the learner a sense of satisfaction.

The subjects chosen should give the learner the best possible opportunity to gain the highest level of success of which they are capable.

There will be many other things which are of concern to individual learners. The important thing is that these should be taken into account by the individual learner and their parents, as this is essentially an individual choice. Many people can offer advice but they cannot make the final decision which must rest with the learner.



GUIDED CHOICES TIMELINE

26th February Subject Experts will be reviewing data to provide guidance on learners' areas of strengths

W/C 3rd March Guided Choices Learners' Assembly

17th March Guided Choices Parent/Carers Evening







18th March Options Link sent to parents/carers to select choices
Deadline for submission: (31st March)

24th March Parent Support Meeting
One to One Meeting with a senior leader. (Booking required)

31st March Submission Deadline (do not miss this deadline please)

The World of Employment...

MOST POPULAR JOBS IN 2024




JOB TYPE	SECTOR	ANNUAL SALARY
1 Qualified social worker	Social care	£32,667
2 Multi-skilled maintenance engineer	Engineering	£47,200
3 Quantity surveyor	Construction	£51,083
4 Cyber security manager	Technology	£83,950
5 Energy/carbon manager	Sustainability	£61,250
6 Engineering project manager	Engineering	£61,750
7 Special educational needs teaching assistant	Education	£23,000
8 Credit controller	Finance	£28,375
9 Newly qualified accountant	Finance	£49,458
10 Supplier relationship manager	Procurement /supply chain	£58,600

The World of Employment...

TOP 20 HIGHEST PAYING JOBS OF 2023

HIGHEST PAYING JOBS IN 2023	AVERAGE YEARLY SALARY
Chief executives and senior officials	£113,577
Information technology directors	£91,810
Marketing, sales and advertising directors	£87,050
Public relations and communications directors	£77,351
Directors in Logistics, Warehousing and Transport	£71,271
Head teachers and principals	£71,282
Transport Associate Professionals	£64,238
Train and tram drivers	£63,807
Financial managers and directors	£63,637
Functional managers and directors	£62,772
Specialist medical practitioners	£61,672
Senior Officers in Protective Services	£59,881
Senior police officers	£59,053
Medical Practitioners	£54,346
Electrical engineers	£53,356
Other Drivers and Transport Operatives	£51,962
Business and Financial Project Management Professionals	£51,834
IT project managers	£51,815
Sales accounts and business development managers	£50,995
IT business analysts, architects and systems designers	£50,737



The World of Employment: Dudley...

Labour Market Information

*LMI obtained from the Office for National Statistics and Gov.uk. Poster last updated August 2020

** Data used in this poster covers the period April - June 2020 and includes furloughed workers

National
Careers
Service

Black Country LEP

Dudley, Sandwell, Walsall & City of Wolverhampton



Employment

UK - 76.4%
LEP - 70.8%



Unemployment

UK - 3.9%
LEP - 5.5%

16-64 year old population = 732,900 Total population = 1,193,400

Full-Time Salary



UK Average - £30,414
LEP Average - £27,736

Self-Employment



64,800 people in the region are self-employed

Apprenticeships

There are approximately 976 live vacancies within a 40 mile radius of Walsall, including...

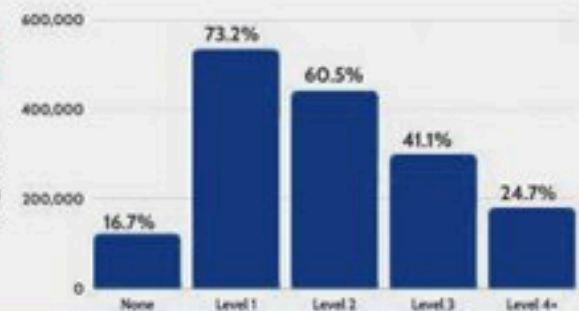
- Recruitment Consultant
- Customer Service
- Business & Administration
- Network Engineer
- Software Development
- Dental Nursing
- Pharmacy Assistant
- Childcare
- Assistant Cardiac Physiologist
- Care Work

Plus many more! Find local opportunities on www.apprenticeships.gov.uk/



Qualification levels

441,000 people have at least a level 2 qualification such as GCSEs or an NVQ.



Where do people work right now?

Most jobs

- Wholesale & Retail - 86,000 (19.1%)
- Health & Social Care - 65,000 (14.4%)
- Manufacturing - 65,000 (14.4%)
- Education - 43,000 (9.6%)
- Administration - 35,000 (7.8%)

Fewest jobs

- Finance & Insurance - 9,000 (2%)
- Information Technology - 7,000 (1.6%)
- Water, Sewerage & Waste - 4,500 (1%)
- Electricity, Gas & Air - 1,750 (0.4%)
- Mining, Quarrying & Utilities - 10 (0.001%)

Growth Sectors

- Creative and Digital
- Transport
- Advanced Manufacturing
- Environmental Technology
- Health and Social Care

There are many other sectors that will grow in your region

What are some of the region's big name employers?



Careerometer...

Medical practitioners		Fire service officers (watch manager and below)	
Weekly Pay £1,440	Annual Pay £74,880	Weekly Pay £760	Annual Pay £39,520
Hours/Week 34h	Hourly Pay £42	Hours/Week 42h	Hourly Pay £18
Workforce Change (projected)		Workforce Change (projected)	
Growth 6.9%	Replacement 52.8%	Contraction -0.2%	Replacement 38.3%
<p>The workforce is projected to grow by 6.9% over the period to 2027, creating 21,300 jobs. In the same period, 52.8% of the workforce is projected to retire, creating 162,500 job openings.</p>		<p>The workforce is projected to contract by -0.2% over the period to 2027, losing 100 jobs. In the same period, 38.3% of the workforce is projected to retire, creating 15,600 job openings.</p>	
<p>You might find this job in</p> <ul style="list-style-type: none"> Health Public admin. & defence Membership organisations Retail trade Education 		<p>You might find this job in</p> <ul style="list-style-type: none"> Public admin. & defence Health Computer programming, etc Food & beverage services Services to buildings 	
Veterinarians		Authors, writers and translators	
Weekly Pay £850	Annual Pay £44,200	Weekly Pay £710	Annual Pay £36,920
Hours/Week 42h	Hourly Pay £20	Hours/Week 38h	Hourly Pay £19
Workforce Change (projected)		Workforce Change (projected)	
Growth 10.4%	Replacement 54.5%	Growth 2.7%	Replacement 59%
<p>The workforce is projected to grow by 10.4% over the period to 2027, creating 2,600 jobs. In the same period, 54.5% of the workforce is projected to retire, creating 13,900 job openings.</p>		<p>The workforce is projected to grow by 2.7% over the period to 2027, creating 2,600 jobs. In the same period, 59% of the workforce is projected to retire, creating 55,900 job openings.</p>	
<p>You might find this job in</p> <ul style="list-style-type: none"> Veterinary Social work 		<p>You might find this job in</p> <ul style="list-style-type: none"> Legal & accounting Publishing activities Arts & entertainment Head offices, etc Computer programming, etc 	

This is an example of the detail you can get about different career paths, this not an exhaustive list.

Careerometer...

Paramedics		Ambulance staff (excluding paramedics)	
Weekly Pay £770	Annual Pay £40,040	Weekly Pay £480	Annual Pay £24,960
Hours/Week 43h	Hourly Pay £18	Hours/Week 44h	Hourly Pay £11
Workforce Change (projected)		Workforce Change (projected)	
Growth 7.9%	Replacement 29.2%	Growth 8.2%	Replacement 32.7%
<p>The workforce is projected to grow by 7.9% over the period to 2024, creating 2,300 jobs. In the same period, 29.2% of the workforce is projected to retire, creating 8,600 job openings.</p>		<p>The workforce is projected to grow by 8.2% over the period to 2024, creating 1,900 jobs. In the same period, 32.7% of the workforce is projected to retire, creating 7,700 job openings.</p>	
<p>You might find this job in</p> <ul style="list-style-type: none"> Health Public admin. & defence Specialised construction Veterinary Office admin. 		<p>You might find this job in</p> <ul style="list-style-type: none"> Health Warehousing, etc Coal, oil & gas; Mining & related Public admin. & defence Architectural & related 	

Actors, entertainers and presenters		Barristers and judges	
Weekly Pay £1,120	Annual Pay £58,240	Weekly Pay £990	Annual Pay £51,480
Hours/Week 43h	Hourly Pay £26	Hours/Week 28h	Hourly Pay £35
Workforce Change (projected)		Workforce Change (projected)	
Growth 0.5%	Replacement 57.7%	Growth 2.4%	Replacement 54.3%
<p>The workforce is projected to grow by 0.5% over the period to 2027, creating 300 jobs. In the same period, 57.7% of the workforce is projected to retire, creating 32,400 job openings.</p>		<p>The workforce is projected to grow by 2.4% over the period to 2027, creating 900 jobs. In the same period, 54.3% of the workforce is projected to retire, creating 19,600 job openings.</p>	
<p>You might find this job in</p> <ul style="list-style-type: none"> Other personal service Sport & recreation Arts & entertainment Membership organisations Libraries, etc 		<p>You might find this job in</p> <ul style="list-style-type: none"> Legal & accounting Public admin. & defence Membership organisations Food & beverage services 	

This is an example of the detail you can get about different career paths, this not an exhaustive list.

Careerometer...

Chartered and certified accountants	Finance and investment analysts and advisers								
<table> <tr> <td>Weekly Pay £900</td> <td>Annual Pay £46,800</td> </tr> <tr> <td>Hours/Week 33h</td> <td>Hourly Pay £27</td> </tr> </table>	Weekly Pay £900	Annual Pay £46,800	Hours/Week 33h	Hourly Pay £27	<table> <tr> <td>Weekly Pay £920</td> <td>Annual Pay £47,840</td> </tr> <tr> <td>Hours/Week 35h</td> <td>Hourly Pay £26</td> </tr> </table>	Weekly Pay £920	Annual Pay £47,840	Hours/Week 35h	Hourly Pay £26
Weekly Pay £900	Annual Pay £46,800								
Hours/Week 33h	Hourly Pay £27								
Weekly Pay £920	Annual Pay £47,840								
Hours/Week 35h	Hourly Pay £26								
Workforce Change (projected) <table> <tr> <td>Growth 2.4%</td> <td>Replacement 54.3%</td> </tr> </table>	Growth 2.4%	Replacement 54.3%	Workforce Change (projected) <table> <tr> <td>Growth 2.9%</td> <td>Replacement 48.7%</td> </tr> </table>	Growth 2.9%	Replacement 48.7%				
Growth 2.4%	Replacement 54.3%								
Growth 2.9%	Replacement 48.7%								
<p>The workforce is projected to grow by 2.4% over the period to 2027, creating 5,900 jobs. In the same period, 54.3% of the workforce is projected to retire, creating 133,400 job openings.</p>	<p>The workforce is projected to grow by 2.9% over the period to 2027, creating 6,200 jobs. In the same period, 48.7% of the workforce is projected to retire, creating 106,800 job openings.</p>								
<p>You might find this job in</p> <ul style="list-style-type: none"> Legal & accounting Wholesale trade Retail trade Health Membership organisations 	<p>You might find this job in</p> <ul style="list-style-type: none"> Auxiliary services Financial services Head offices, etc Public admin. & defence Legal & accounting 								
Engineering professionals n.e.c.	Science, engineering and production technicians n.e.c.								
<table> <tr> <td>Weekly Pay £890</td> <td>Annual Pay £46,280</td> </tr> <tr> <td>Hours/Week 38h</td> <td>Hourly Pay £23</td> </tr> </table>	Weekly Pay £890	Annual Pay £46,280	Hours/Week 38h	Hourly Pay £23	<table> <tr> <td>Weekly Pay £590</td> <td>Annual Pay £30,680</td> </tr> <tr> <td>Hours/Week 35h</td> <td>Hourly Pay £17</td> </tr> </table>	Weekly Pay £590	Annual Pay £30,680	Hours/Week 35h	Hourly Pay £17
Weekly Pay £890	Annual Pay £46,280								
Hours/Week 38h	Hourly Pay £23								
Weekly Pay £590	Annual Pay £30,680								
Hours/Week 35h	Hourly Pay £17								
Workforce Change (projected) <table> <tr> <td>Growth 2.4%</td> <td>Replacement 38.9%</td> </tr> </table>	Growth 2.4%	Replacement 38.9%	Workforce Change (projected) <table> <tr> <td>Growth 0.5%</td> <td>Replacement 43%</td> </tr> </table>	Growth 0.5%	Replacement 43%				
Growth 2.4%	Replacement 38.9%								
Growth 0.5%	Replacement 43%								
<p>The workforce is projected to grow by 2.4% over the period to 2027, creating 2,500 jobs. In the same period, 38.9% of the workforce is projected to retire, creating 41,700 job openings.</p>	<p>The workforce is projected to grow by 0.5% over the period to 2027, creating 300 jobs. In the same period, 43% of the workforce is projected to retire, creating 21,000 job openings.</p>								
<p>You might find this job in</p> <ul style="list-style-type: none"> Specialised construction Other trans. equipment Architectural & related Machinery, etc Metal products 	<p>You might find this job in</p> <ul style="list-style-type: none"> Education Public admin. & defence Telecommunications Computer programming, etc Food products 								

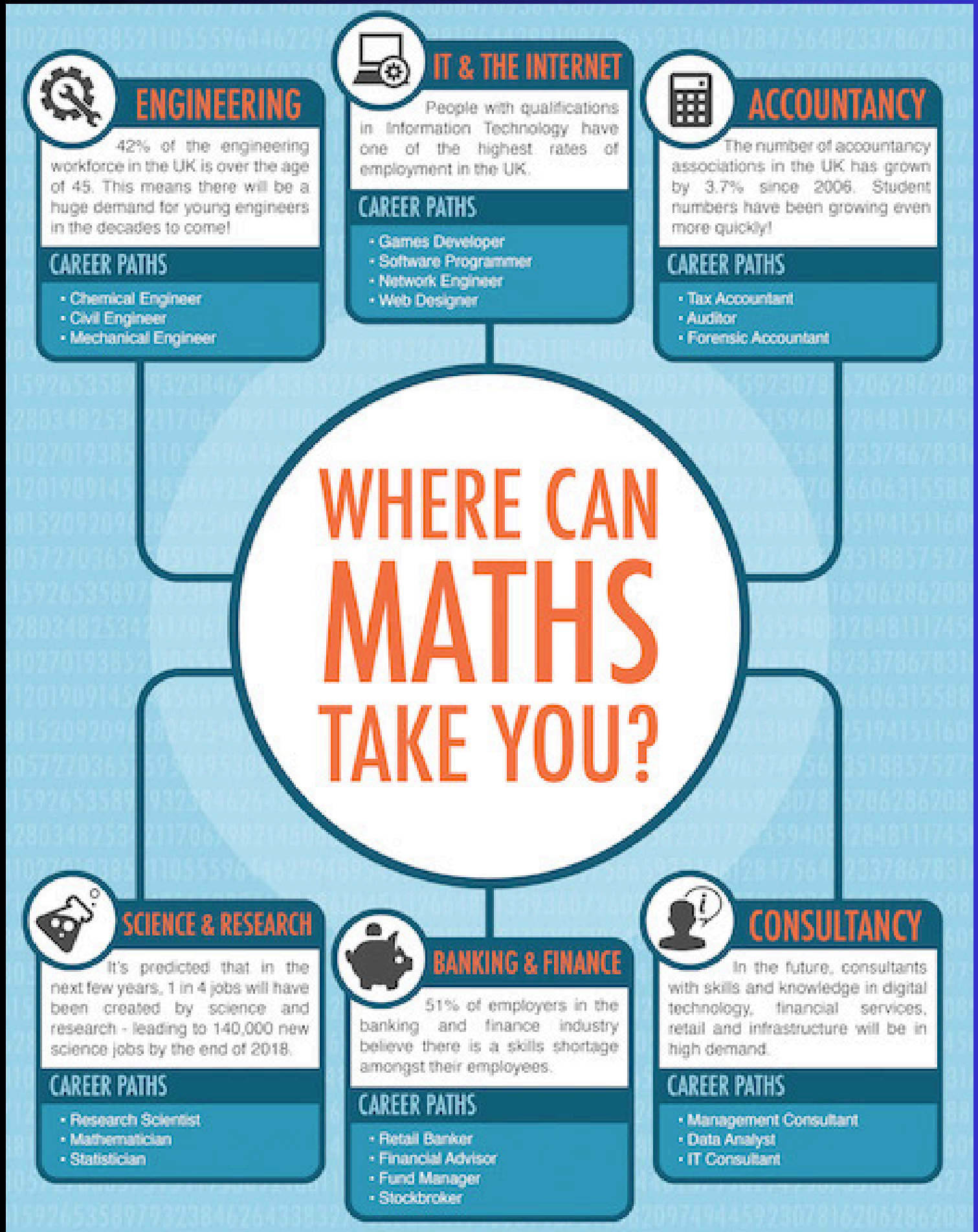
This is an example of the detail you can get about different career paths, this not an exhaustive list.

Careerometer...

Photographers, audio-visual and broadcasting equipment operators		Journalists, newspaper and periodical editors	
Weekly Pay £600	Annual Pay £31,200	Weekly Pay £930	Annual Pay £48,360
Hours/Week 36h	Hourly Pay £17	Hours/Week 30h	Hourly Pay £31
Workforce Change (projected)		Workforce Change (projected)	
Growth 0.5%	Replacement 57.7%	Growth 2.4%	Replacement 54.3%
The workforce is projected to grow by 0.5% over the period to 2027, creating 500 jobs. In the same period, 57.7% of the workforce is projected to retire, creating 59,800 job openings.		The workforce is projected to grow by 2.4% over the period to 2027, creating 2,200 jobs. In the same period, 54.3% of the workforce is projected to retire, creating 49,900 job openings.	
You might find this job in Employment activities Film & music Other professional Arts & entertainment Publishing activities		You might find this job in Advertising, etc Publishing activities Arts & entertainment Sport & recreation Film & music	
Sports players		Aircraft pilots and flight engineers	
Weekly Pay £1,290	Annual Pay £67,080	Weekly Pay £1,850	Annual Pay £96,200
Hours/Week 39h	Hourly Pay £33	Hours/Week 40h	Hourly Pay £46
Workforce Change (projected)		Workforce Change (projected)	
Growth 0.5%	Replacement 57.7%	Growth 2.9%	Replacement 48.7%
The workforce is projected to grow by 0.5% over the period to 2027, creating 100 jobs. In the same period, 57.7% of the workforce is projected to retire, creating 11,800 job openings.		The workforce is projected to grow by 2.9% over the period to 2027, creating 700 jobs. In the same period, 48.7% of the workforce is projected to retire, creating 11,800 job openings.	
You might find this job in Sport & recreation		You might find this job in Air transport Warehousing, etc Public admin. & defence Education	

This is an example of the detail you can get about different career paths, this not an exhaustive list.

The Suite of Core Academic Subjects..



The Suite of Core Academic Subjects..



ART & DESIGN

This industry has one of the highest rates of self-employment in the UK, with 28% of the workforce (designers and artists) working as freelancers.

CAREER PATHS

- Graphic Designer
- Art Auctioneer
- Gallery Curator



PUBLISHING & MEDIA

Recently, employment in this area has increased by 10%. In fact, 1/10 jobs held by graduates in the UK are in this area!

CAREER PATHS

- Journalist
- Editor
- Writer



EDUCATION

People who work in education (especially teachers) have one of the highest rates of job satisfaction in the UK. 78% of teachers say they enjoy their job.

CAREER PATHS

- English Teacher
- Private Tutor
- University Lecturer



WHERE CAN
ENGLISH
TAKE YOU?



RECRUITMENT & HR

The recruitment and human resources industry employs around 100,000 people in the UK and this is only expected to grow in the years to come.

CAREER PATHS

- Recruitment Consultant
- HR Officer
- Training Manager



LAW

93% of first degree law graduates find full-time employment within six months of graduation. There's also a demand for those with knowledge in online law.

CAREER PATHS

- Barrister
- Magistrate
- Court Usher



ADVERTISING & MARKETING

There are around 400,000 advertising and marketing jobs in the UK. Marketing is also one of the industries with the highest rate of job satisfaction!

CAREER PATHS

- Copywriter
- Public Relations Officer
- Researcher

The Suite of Core Academic Subjects..



SCIENCE & RESEARCH

It's predicted that in the next few years, 1 in 4 jobs will have been created by science and research - leading to 140,000 new science jobs by the end of 2018.

CAREER PATHS

- Research Scientist
- Biologist
- Forensic Scientist



MEDICINE & HEALTHCARE

Graduates with degrees in healthcare are the most likely to find employment and often have the highest average annual pay.

CAREER PATHS

- Doctor
- Nurse
- Pharmacologist



AGRICULTURE

Between 2010 and 2020, it's estimated that the agriculture industry will need 200,000 extra employees. This sector employs 3.5 million people across the UK!

CAREER PATHS

- Farmer
- Tree Surgeon
- Ecologist

WHERE CAN BIOLOGY TAKE YOU?



SPORT & FITNESS

There are currently 440,000 people employed in the sport & fitness industry. This is 2.3% of all jobs! The biggest employers are football and horse racing.

CAREER PATHS

- Athlete
- Nutritionist
- Personal Trainer



ENGINEERING

42% of the engineering workforce in the UK is over the age of 45. This means there will be a huge demand for young engineers in the decades to come!

CAREER PATHS

- Biochemical Engineer
- Civil Engineer
- Mechanical Engineer



POLICE & EMERGENCIES

People who are trained paramedics are always in demand and the workforce is constantly rising. There is also a demand for people with digital and IT skills.

CAREER PATHS

- Paramedic
- Crime Scene Investigator
- Police Officer

The Suite of Core Academic Subjects..



SCIENCE & RESEARCH

It's predicted that in the next few years, 1 in 4 jobs will have been created by science and research - leading to 140,000 new science jobs by the end of 2018.

CAREER PATHS

- Research Scientist
- Chemist
- Forensic Scientist



MEDICINE & HEALTHCARE

Graduates with degrees in healthcare are the most likely to find employment and often have the highest average annual pay.

CAREER PATHS

- Doctor
- Nurse
- Pharmacologist



FAST CONSUMER GOODS

This industry lives up to its name since it is constantly changing and evolving, which also means it has one of the highest rates of career progression!

CAREER PATHS

- Quality Controller
- Food Scientist
- Market Researcher

WHERE CAN CHEMISTRY TAKE YOU?



ENERGY & UTILITIES

By 2023, it's estimated that this industry's workforce will need to increase by more than 200,000 people due to renewable power introducing a wider range of jobs.

CAREER PATHS

- Petroleum Engineer
- Geochemist
- Mudlogger



ENGINEERING

42% of the engineering workforce in the UK is over the age of 45. This means there will be a huge demand for young engineers in the decades to come!

CAREER PATHS

- Chemical Engineer
- Civil Engineer
- Mechanical Engineer



MANUFACTURING

The manufacturing sector employs around 2 million people and accounts for 8% of employment in the UK. That's a lot of jobs!

CAREER PATHS

- Food Technologist
- Manufacturing Engineer
- Manufacturing Manager

The Suite of Core Academic Subjects..



ENGINEERING

42% of the engineering workforce in the UK is over the age of 45. This means there will be a huge demand for young engineers in the decades to come!

CAREER PATHS

- Electronic Engineer
- Civil Engineer
- Mechanical Engineer



IT & THE INTERNET

People with qualifications in Information Technology have one of the highest rates of employment in the UK.

CAREER PATHS

- Games Developer
- Software Programmer
- Network Engineer
- Web Designer



ENERGY & UTILITIES

By 2023, it's estimated that this industry's workforce will need to increase by more than 200,000 people due to renewable power introducing a wider range of jobs.

CAREER PATHS

- Electrician
- Geoscientist
- Plumber

WHERE CAN PHYSICS TAKE YOU?



SCIENCE & RESEARCH

It's predicted that in the next few years, 1 in 4 jobs will have been created by science and research - leading to 140,000 new science jobs by the end of 2018.

CAREER PATHS

- Research Scientist
- Physicist
- Statistician



TRANSPORT & LOGISTICS

The UK transport industry is considered to be the 4th best in the world and employs 2.2 million people across the nation.

CAREER PATHS

- Mechanic
- Air Traffic Controller
- Pilot
- Transport Planner



CONSTRUCTION

With well over 280,000 businesses trading in construction and property, this sector accounts for 10% of all employment in the UK. That's 2.93 million jobs!

CAREER PATHS

- Tradesperson
- Architect
- Construction Manager

The Suite of Core Academic Subjects..

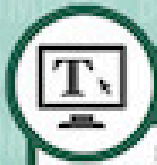


HOSPITALITY & TOURISM

Tourism is the fastest growing sector when it comes to employment. It's also the third largest employer, accounting for 9.6% of jobs in the UK!

CAREER PATHS

- Tour Guide
- Museum Curator
- Tour Operator



PUBLISHING & MEDIA

Recently, employment in this area has increased by 10%. In fact, 1/10 jobs held by graduates in the UK are in this area!

CAREER PATHS

- Journalist
- Editor
- Writer



EDUCATION

People who work in education (especially teachers) have one of the highest rates of job satisfaction in the UK. 78% of teachers say they enjoy their job.

CAREER PATHS

- Language Teacher
- Private Tutor
- University Lecturer

WHERE CAN LANGUAGES TAKE YOU?



RECRUITMENT & HR

The recruitment and human resources industry employs around 100,000 people in the UK and this is only expected to grow in the years to come.

CAREER PATHS

- Recruitment Consultant
- HR Officer
- Training Manager



LAW

93% of first degree law graduates find full-time employment within six months of graduation. There's also a demand for those with knowledge in online law.

CAREER PATHS

- Barrister
- Magistrate
- Court Usher



ADVERTISING & MARKETING

There are around 400,000 advertising and marketing jobs in the UK. Marketing is also one of the industries with the highest rate of job satisfaction!

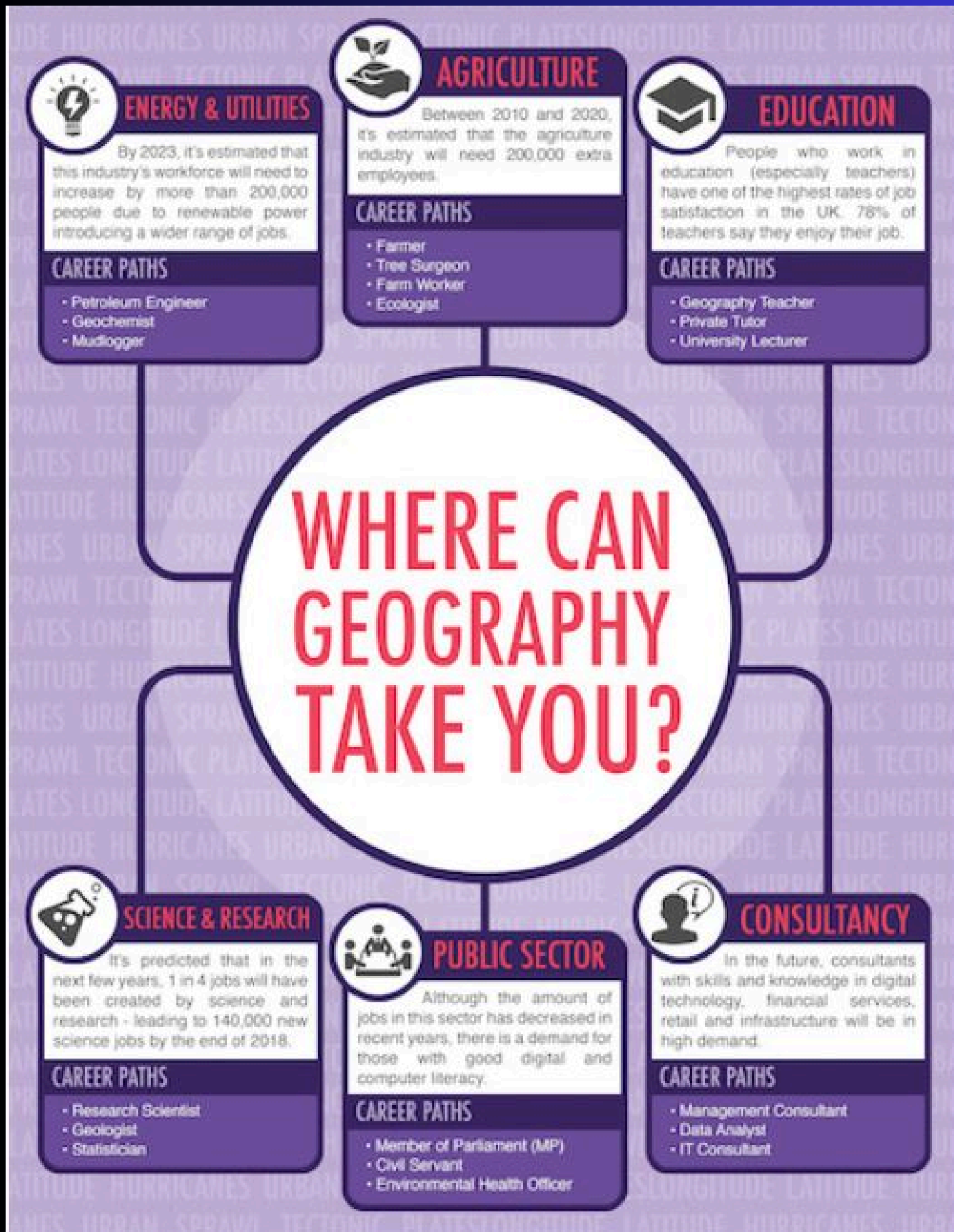
CAREER PATHS

- Copywriter
- Public Relations Officer
- Researcher

The Suite of Core Academic Subjects..



The Suite of Core Academic Subjects..



Post 16 Options

Options:	A-Levels	Apprenticeships	T-Levels	Level 3 BTEC
Duration:	2 years	18-48 Months	2 Years	2 years (with a 1 year option)
Learning method:	100% classroom-based	80% on-the-job training and 20% off-the-job training	80% classroom learning and 20% unpaid placement	Classroom-based, however some subjects may require placements
Type of placement:	Academic	Paid	Unpaid	Unpaid
How they are assessed:	Linear - assessed through external exams at the end of year 2	Coursework and exams	Mix of assessments	Coursework and exams
Progression:	Progression to higher education	Usually not much progression onto higher education	Progression to higher education, and employment of a higher apprenticeship	Progression to higher education, apprenticeships and employment
Requirements:	Usually grade 4 and above at GCSE	For students that are ready to enter into work	For students who are fairly certain about their career path	For students who want to keep their options open

YOUR TASK: RESEARCH TOP 5 JOBS

Order	Company	Job Title	Subjects required	Rate your passion (1-5)



OUR CONTACT

general@stjamesacademy.org.uk

Contact Mr Palmer

bpalmer@stjamesacademy.org.uk